

20,000 m³ SHALLOW DRAFT LNG CARRIER

ICE has designed a shallow-draft gas carrier, with a cargo capacity of 20,000 cu. m. in two type C bi-lobe cargo tanks, semi-pressurised and fully refrigerated.

With a five-meter draft, the vessel is designed for both seagoing service and to meet the LNG delivery challenges presented by shallow rivers and restricted harbours.

The Cargo Containment System (CCS) facilitates “milk-run” type delivery to a variety of small and medium size terminals, allowing partial loading levels of cargo tanks and atmospheric pressure discharge.



International Contract Engineering Ltd. © 2018

The type C bi-lobe cargo tanks have been dimensioned to maximize cargo-carrying capacity within a given set of hull dimensions and draft restrictions, without altering the ship's performance.

The dual-fuel propulsion system is able to run on cargo boiloff gas (BOG) or distillate fuel.

BOG utilised as fuel allows the vessel to comply with sulphur emission control area (SECA) restrictions and to manage the amount of BOG during laden trips.

The concept is open to design variations in terms of overall vessel size and propulsion system arrangement.



Principal Dimensions

Length o.a.	140.00 m
Length p.p.	132.70 m
Breadth mld.	35.00 m
Depth at side mld.	10.00 m
Depth at CL mld.	10.30 m
Draught, summer	5.00 m
Deadweight, summer draught	10,927 t

Capacities

Cargo	20,000 cu. m.
Marine Diesel Fuel.....	790.00 t
Lub. Oil	33.00 t
Ballast Water	9,894.00 t
Fresh Water	64.00 t

Accommodation

Accommodation	18 persons
---------------------	------------

Cargo System

2 x 10,000 cu. m. IMO Independent Type C Bi-lobe Cargo Tanks

Speed

Service Speed	13.00 knots
Endurance	14 days

Propulsion System

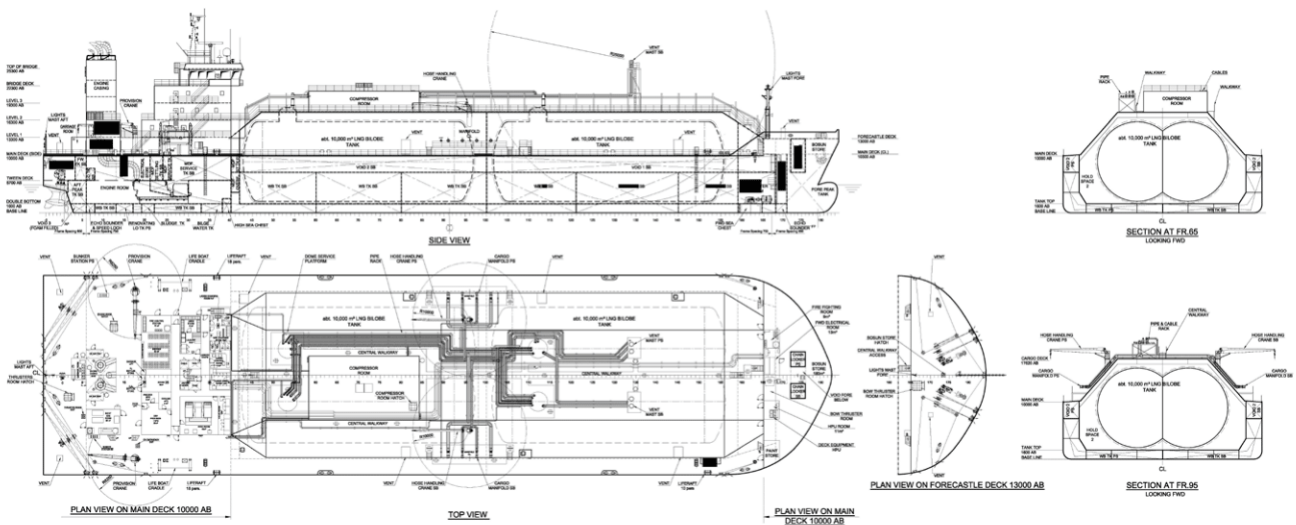
Electric Drive

Main propulsion 2 x 3,500 kW
Azipull thrusters

Manoeuvring / auxiliary propulsion 1 x 1,500 kW jet
pump bow thruster

Class

✕ A1, Liquefied Natural Gas Carrier with Independent Tanks, , ✕ AMS, ✕ ACCU, ✕ APS, BWT, DFD, R2, MAN, SH, SHCM



International Contract Engineering Limited, 19-21 Circular Road, Douglas, Isle of Man, IM1 1AF British Isles
Tel: +44 (0)1624 623 190 | Fax: +44 (0)1624 628 297 | www.icedesign.info

ENGINEERING CERTAINTY

With a 50-year track record and an annual capacity of 700,000 professional engineering man-hours, the International Contract Engineering (ICE) Group is Europe's largest independent ship design consultancy. We provide high-calibre multi-discipline design services to yards and owners in the commercial shipping, defence and offshore energy industries, ranging from conceptual studies and Class drawings to detail design and production information. We cover a full range of naval architecture and marine engineering disciplines such as hydrodynamics, structural, mechanical, piping, electrical, instrumentation, outfit and HVAC. Our experience includes gas carriers, passenger vessels, navy and coast guard ships, chemical tankers, drill ships, FSO/FPSOs and a range of other vessels. We also have available proprietary designs that can be adapted to clients' requirements.

With our head office in the Isle of Man and our main engineering facilities in Romania, we provide high quality design and engineering at very competitive prices.