

## 32,000 DWT DOUBLE HULL BULK CARRIER

ICE has designed a double hull Handy-size bulk carrier with large hatches that is robust, flexible and economical. It is compliant with the latest relevant Common Structural Rules. The 32,000 dwt vessel is suitable for carrying a wide range of bulk cargoes, such as: coal, grain, ore, cement, alumina, bauxite, bagged cargoes, steel coils, industry log, lumber and plywood. The ship is equipped with propeller boss cap fins (PBCF) that result in a propulsion performance improvement of about 5% as well as with other energy-saving features that results in highly economical operations.

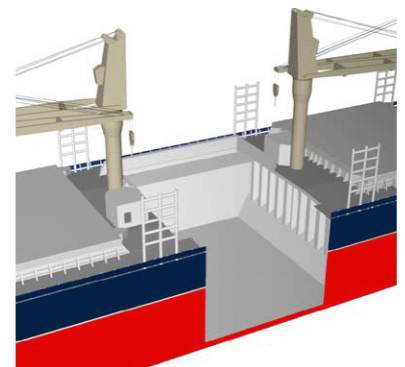


International Contract Engineering Ltd. © 2017

She is laid out with 5 cargo holds and equipped with four 30 tonnes SWL deck cranes (holds 2, 3 and 4 are fully box shaped and holds 1 and 5 are semi-box type with lower hopper slopes as necessary to provide double skin).

The vessel is designed to be an ocean going bulk carrier with bulbous bow, transom stern, raised forecastle and poop deck, open water type stern frame, single rudder and single screw propeller driven by a slow speed diesel engine.

- Deadweight, design ..... 32,000 t
- Service speed ..... 14.0 knots
- Length o.a. .... 182.50 m



## Principal Dimensions

Length o.a. ....	182.50 m
Length p.p. ....	175.00 m
Breadth mld. ....	29.00 m
Depth mld. ....	14.75 m
Draught, design ....	9.85 m
Draught, scantling .....	10.20 m

## Capacities

Deadweight, design .....	32,000 t
Cargo Hold Cubic (grain) .....	43,000 cbm
Heavy Fuel Oil .....	1,780 cbm
Marine Diesel Oil .....	195 cbm
Fresh Water, potable .....	39 cbm
Fresh Water, technical .....	310 cbm
Water Ballast.....	13,700 cbm
Gross Tonnage, GRT.....	23,185
Net Tonnage, NRT .....	10,875
Accommodation (including trainees) .....	30

## Ballast System

Ballast pumps .....	2 x 650 cbm/h
Ballast eductor.....	1 x 100 cbm/h

## Speed

Service speed .....	14.0 knots
---------------------	------------

## Cargo Handling

4 deck cranes (conventional electro-hydraulic wire luffing type)

Safe working load .....30.00 t

Max. working radius .....26.00 m

Cargo hatch covers: End-folding, hydraulically operated, double skin steel hatch covers with grain/cement feeder openings.

Hatch dimensions (L x B):

Hatch no. 1 ..... 16.8 x 15.0 m

Hatch no. 2-5.....20.8 x 21.5 m

## Machinery

Main engine ..... MAN B&W 6S46 MC-C Mk7

Propeller ..... 5.5 m, 4 blade, fixed pitch

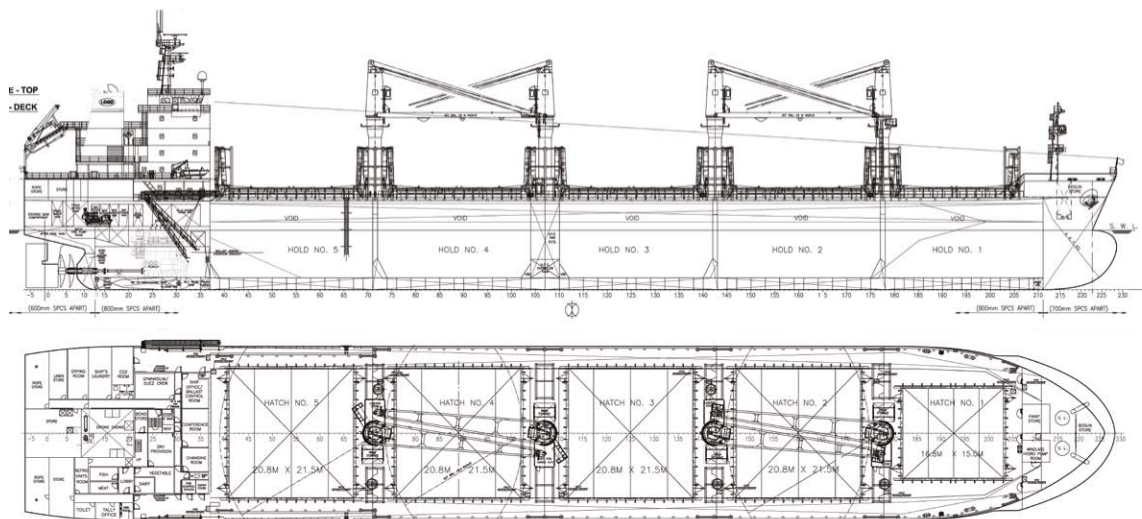
Aux. Machinery ..... 2 generator sets of 500 kW; 1 set PTO generator of 500 kW

Emergency generator ..... 150 kW

## Class - NK

N5\*(CSR, BC-A, BC-XII, GRAB 20, EQ C LB)(ESP(PSCM), MNS\* Strengthened for heavy cargo loading, where holds nos. 2 & 4 may be empty.

Description note in classification certificate: Alternately holds nos. 1, 3 and 5 may be empty on part load.



**ENGINEERING CERTAINTY**  
International Contract Engineering Limited, 19-21 Circular Road, Douglas, Isle of Man, IM1 1AF British Isles  
Tel: +44 (0)1624 623 190 | Fax: +44 (0)1624 628 297 | [www.icedesign.info](http://www.icedesign.info)

With a 50-year track record and an annual capacity of 700,000 professional engineering man-hours, the International Contract Engineering (ICE) Group is Europe's largest independent ship design consultancy. We provide high-calibre multi-discipline design services to yards and owners in the commercial shipping, defence and offshore energy industries, ranging from conceptual studies and Class drawings to detail design and production information. We cover a full range of naval architecture and marine engineering disciplines such as hydrodynamics, structural, mechanical, piping, electrical, instrumentation, outfit and HVAC. Our experience includes gas carriers, passenger vessels, navy and coast guard ships, chemical tankers, drill ships, FSO/FPSOs and a range of other vessels. We also have available proprietary designs that can be adapted to clients' requirements.

With our head office in the Isle of Man and our main engineering facilities in Romania, we provide high quality design and engineering at very competitive prices.